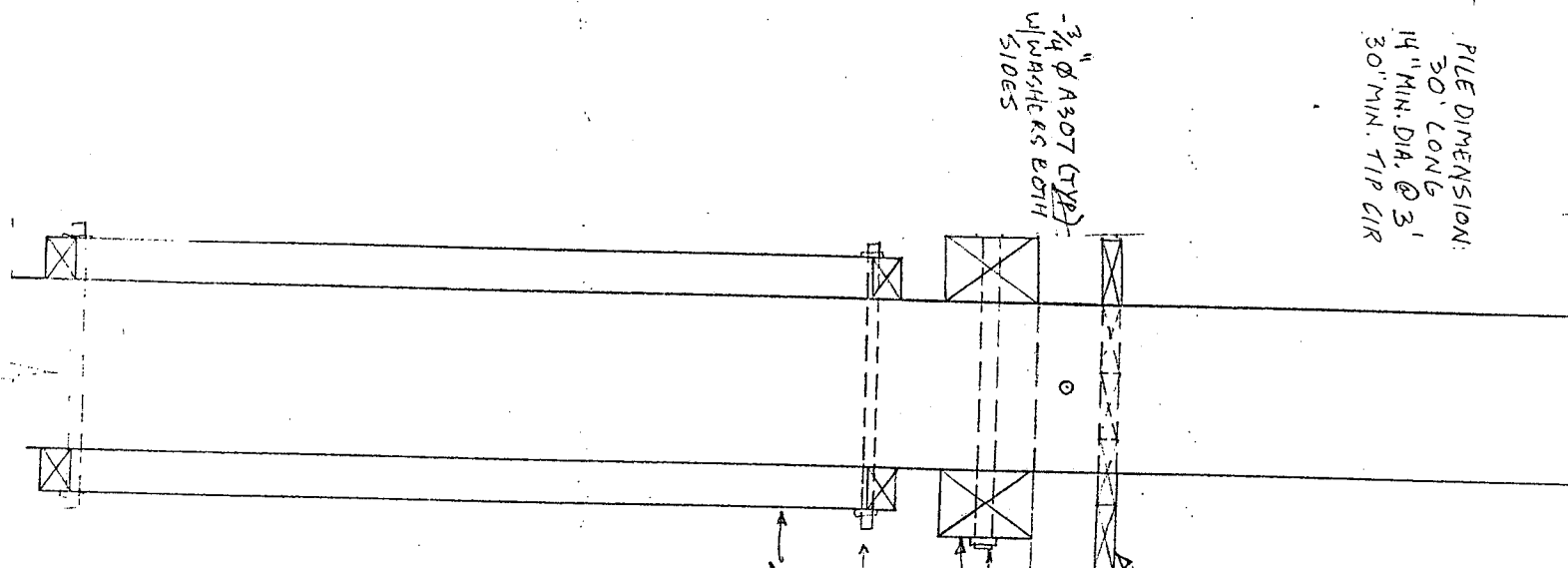


PILE DIMENSION:  
 30' LONG  
 14" MIN. DIA. @ 3'  
 30" MIN. TIP CIR



2"x4" RAIL  
 LAG SCREWED

- NOTES:**
- ① LENGTH OF PIER TO REMAIN AT 49'-2"
  - ② GAWBWAY, FLOAT & RAMP POSITION REMAIN THE SAME

CONCEPTUAL PLAN-WIXON DOCK

DATE 3/10/10

SCALE 3/4"=1'-0"

HARWICH ENGINEERING DEPT.

TOWN OF HARWICH